



Does Green Look Too Familiar?

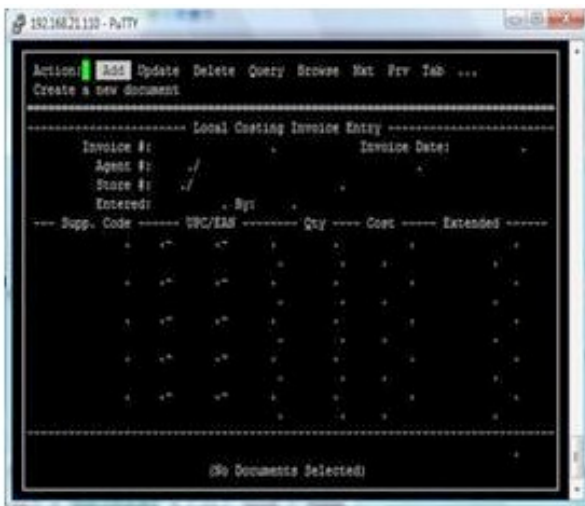
If you still have **green screens**, chances are that your users have suggested an upgrade or conversion project to get a **“point and click”** or graphical user interface (GUI) format.

The users have a point: green screen applications make data entry more tedious and difficult, resulting in more entry errors, lower productivity, increased user training, and even sticky notes reminding the user which key combinations to press! One Point Solutions can get you to GUI.

The Shortest Path from Green to GUI

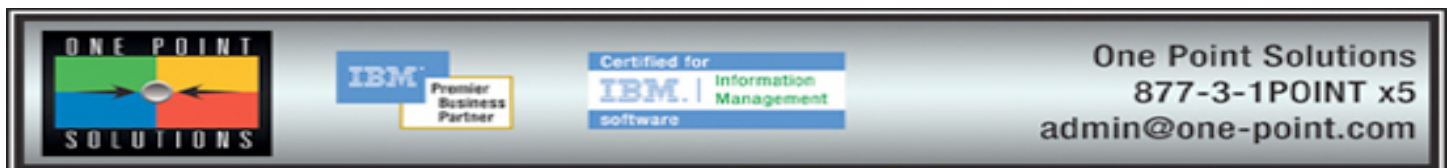
Your Informix database and applications are trusted – time-tested, stable, available and the data is reliable -- don't disrupt them. Modernize the screens while leaving the existing application in place.

One Point can help you retain the reliability of your existing applications while realizing the advantages of a modern interface that will increase productivity and provide much greater control over critical business applications – for a richer environment with minimal disruption.



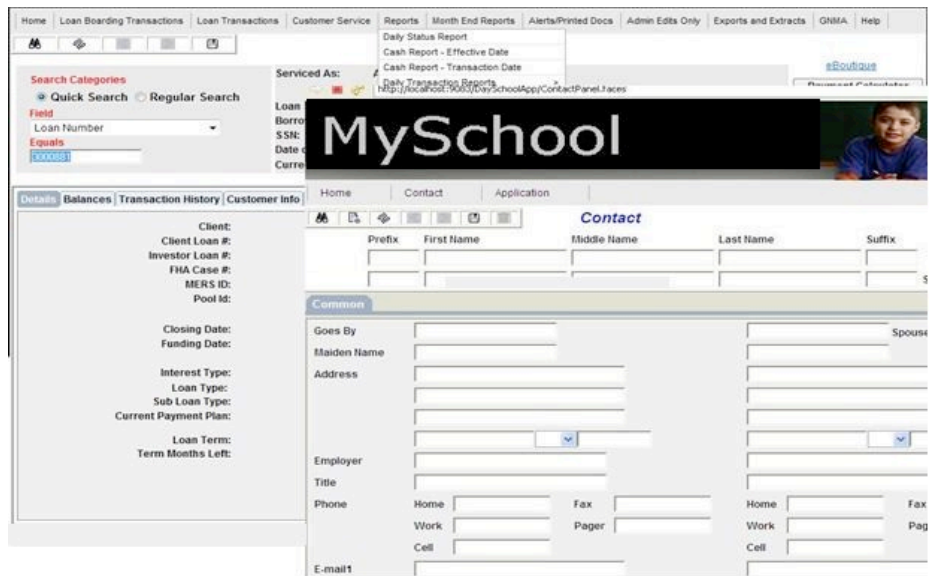
Don't Waste Resources Rewriting Existing Systems

The above is just one of many examples of a text-based green screen (left) that was modernized to a GUI look-and-feel (right). The result is a sharp application presentation that can be used internally or externally via a Web browser or other GUI, while being simple enough for summer interns and part-timers to use intuitively without sticky notes and extensive training.





One Point Solutions can move your old screens from green to GUI for less than the cost of re-writing an application or purchasing expensive new software solutions, keeping the business competitive without disrupting operations and without a major overhaul of a reliable application. Following is an example of an Informix-4GL screen that went through our process.



One Point offers World-Class Data Solutions Powered by IBM

Since 1997, One Point Solutions has been focused on data solutions and integration, including applications, databases, data warehouses, reporting and analytics. Because of this intense focus, we serve as **one point of contact for your IBM data solutions**. Services include:

- **Migration of Informix engine and 4GL versions** with or without GUI conversion.
- **Right-size IBM licensing** that takes advantage of optimized IBM license models.
- **Best-fit implementation** based on decades of application migration and modernization.
- **Complete set of services using proven methodologies**, including design and scoping, development, testing, implementation, documentation, training and ongoing support.
- Development that is complete, **on time and within budget**, using IBM technology.
- **Flexible pricing models** for project scoping and implementation services.
- **Modernized applications** that become GUI- or web-enabled, interfaced or integrated with other applications and databases via technologies like SOA, or simply enhanced and stabilized.
- **24 x 7 support** by experienced, US-based personnel.
- **Integration with non-IBM technologies** including Microsoft, Oracle, open source and others.
- **Virtualization** using server-based computing, VMs, or internal/external clouds.
- **Web 2.0 Rich User Interface:** RUI, Informix-4GL, Rational, Java, .NET, 4JS Genero, and more.

