



One Point Solutions

One Point of Contact for IBM Data Solutions and Services

Does this Look Familiar?

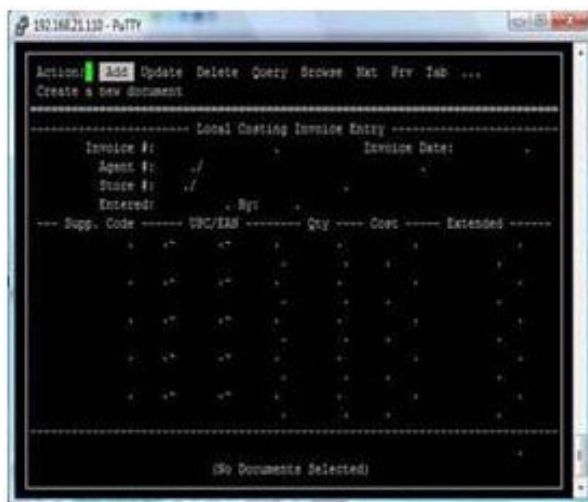
If you still have **green screens**, chances are that your users have suggested an upgrade or conversion project to get a “[point-and-click](#)” or graphical user interface (GUI) format.

The users have a point: green screen applications make data entry more tedious and difficult, resulting in more entry errors, lower productivity, increased user training, and even sticky notes reminding the user which key combinations to press!

The Shortest Path from Green to GUI

Your Informix database and applications are trusted – time-tested, stable, available and the data is reliable -- don't disrupt them. Modernize them while leaving the existing applications in place.

One Point can help you retain the reliability of your existing application and realize the advantages of a modern interface to increase productivity and provide much greater control over critical business applications – for a richer environment with minimal disruption.



Don't Waste Resources Re-Writing Existing Systems

The above is just one of many examples where a text-based green screen (left) was modernized to a GUI look-and-feel (right). The result is a sharp application presentation that can be used internally or externally via a Web browser or other GUI – and also simple enough for summer interns and part-timers to use without sticky notes and extensive training.



One Point Solutions

877-3-1POINT x5
admin@one-point.com
<http://www.one-point.com>



One Point Solutions

One Point of Contact for IBM Data Solutions and Services

One Point Solutions can move your old screens from green to GUI for less than the cost of re-writing an application, keeping the business competitive without disrupting operations and without a major overhaul of a reliable application.

One Point offers World-Class Data Solutions Powered by IBM

Since 1977, One Point Solutions has been focused on data solutions and integration, including databases, data warehouses and reporting. Having migrated and written millions of lines of code, our migration services provide:

- **Best-fit implementation** based on decades of application migration and modernization experience.
- **GUI-based analytics and dashboards** for previous manual reporting processes
- **Complete set of services** from initial requirements to design, development, testing, implementation, documentation, ongoing support and updates, using proven methodologies.
- Development that is complete **on time and within budget**, using IBM technology.
- **Modernize** applications that to become GUI- or web-enabled, interfaced or integrated with other applications, or simply enhanced and stabilized.
- **24 x 7 support** by experienced, US-based personnel.
- Integration with numerous databases including Microsoft, Oracle, open source, many others.
- **Web 2.0 Rich** User Interface (RUI) technology.
- **Virtualize** your environment using server-based virtualization and cloud options.

For more information: www.one-point.com/green-to-gui



One Point Solutions

877-3-1POINT x5
admin@one-point.com
<http://www.one-point.com>